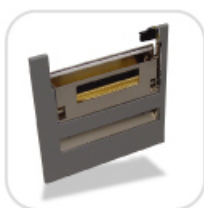




# 表现完美的现场标签 打印系统

## M-84PRO

选购件



剥离器



切刀



回卷器

### 重工业型 条码打印机

M84Pro是SATO专为重工业和精确打印设计的机型。用户可自行更换打印头：203、305和609dpi，加上打印速度快，这款机型成为高质量打印的首选。另外，丰富的选件使M84Pro的性能更加全面、可靠。



打印方式	直热/热转印
打印分辨率	203/305/609dpi (8/12/24dpm)可选
最大打印范围	203 dpi: W104mm x L1249mm (W4.1" x L49.2")
	305 dpi: W104mm x L835mm (W4.1" x L32.8")
	609 dpi: W104mm x L356mm (W4.1" x L14")
打印速度	203 dpi: 2, 4, 6, 8, 10 ips
	305 dpi: 2, 4, 6, 8 ips
	609 dpi: 2, 3, 4, 5, 6 ips
标签类型	模切纸, 折叠纸, 吊牌, 连续纸
标签尺寸	宽度22mm ~ 125mm (0.87" ~ 5.1")
	长度6mm ~ 356mm (0.24" ~ 14.0")
磁带	宽度38mm ~ 111mm (1.5" ~ 4.4"), 长度450m (Up to 1475ft), 厚度4.5 micron, 内卷
感应模式	Adjustable photo-sensor position for die-cut labels & tags, Fixed reflective sensor for use with preprinted I-marks, Continuous forms with "Sensor Not Used" mode
处理器	32 Bit RISC/133 MHz,
	Receive Buffer: 2.95MB Flash ROM: 2MB (4MB optional) (buffer near full at 2MB)
接口选择	Parallel: IEEE 1284 (ECP), Serial: RS-232C (9600 - 57600 Bps) RS-422/485 (9600 - 57600 Bps)
	LAN (10/100 BaseT) USB Version 1.1
条码	Elementary: UPC-A/E, EAN, JAN, CODE 39, CODE 93, CODE 128, UCC/EAN 128, Inter-Leaved 2/5
	Industrial 2/5, Matrix 2/5, NW-7, MSI, Postnet, Bookland
点阵字体	2 D: QR Code, PDF417, Maxi Code, Data Matrix
	内置字体: XU 5x9 (Alphanumeric, symbols) XS 17x17 (Alphanumeric, symbols)
	XM 24x24 (Alphanumeric, symbols) XB 48x48 (Alphanumeric, symbols)
	XL 48x48 (Alphanumeric, symbols)
	OCR-A (15x22/ 203dpi, 22x33/ 305dpi, 44x66/ 609dpi) (Alphanumeric, symbols)
OCR-B (20x24/ 203dpi, 30x36/ 305dpi, 60x72/ 609dpi) (Alphanumeric, symbols)	
矢量字体	轮廓字体: Alphanumeric, symbols
	光栅字体: CG Times (Alphanumeric, symbols), CG Triumvirate (Alphanumeric, symbols)
	字体旋转: 0°, 90°, 180°, 270° rotation in each data
	字体扩展: Vertical 1 ~ 12 times, Horizontal 1 ~ 12 times, L1 ~ L12 for barcode
	基本功能: Status Report, Graphics (SATO Hex/Binary, bmp file or pcx file), Sequential Numbering, Form Overlay Store, Customized Design Character, Font Decoration, Reverse Image, Line Print, Hex Dump Print, Format Store Outline, Outline Variation, Label Skip, Zero Slash Switchover
功能	自检: 打印头, 打印纸末端, 打印头打开
	储存卡错误, 打印测试
	控制面板: LCD: 16x 2 line Alphanumeric (with backlight) Switch: LINE, FEED
	LED: ERROR, POWER, ONLINE DIP Switch: 2 sets
	VR: PRINT, OFFSET, PITCH
VR调节: Print Position Adjustments, Cutting/Dispensing/ Tear OFF Position Adjustment, Print Darkness Adjustment	
图形支持	SATO Hex/Binary BMP or PCX Format
外部接口	Parallel: 36-pin Amp Serial: DB-25 Ext (Accy): 14-pin Amp
外形尺寸	W265mm x D435mm x H335mm (W10.4" x D17.1" x H13.2")
重量	18.5kg (40.7 lb.)
电源要求	110 - 115V (+/-10%), 220V (+/-10%), 50/60 Hz (+/-1%) Idle: 24VA/16W Operation: 190VA/130W
环境要求	运行: 5 ~ 40°C (41 ~ 104°F) 无凝结, 30 - 80%
	存储: -5 ~ 60°C (23 ~ 140°F) 无凝结, 30 - 90%
认证情况	FCC Class A, U/L, TUV, CE, CSA, CCC
选件	Label Cutter, Label Dispenser, Rewinder, Calendar ROM, PCMCIA Add-On Memory
	4MB Optional Memory PCB, Serial Bus/Ethernet 10/100 Base T/Coax/Twinax Interface

## SATO SHANGHAI CO., LTD.

佐藤自动识别系统国际贸易(上海)有限公司

中国上海虹口区海宁路307号爱思大厦10F

邮编: 200080

Tel: 86 (021) 6306 8899

Fax: 86 (021) 6309 1318

E-mail: sales@satochina.com

## 深圳分公司

地址: 深圳市福田区民田路

171号新华保险大厦906室

Tel: 86 (0755) 8344 8631

Fax: 86 (0755) 8344 8630

## 广州分公司

地址: 广州市天河区珠江新城华强路3-2

富力盈力大厦北塔2006室

Tel: 86 (020) 3862 8003

Fax: 86 (020) 3862 7674